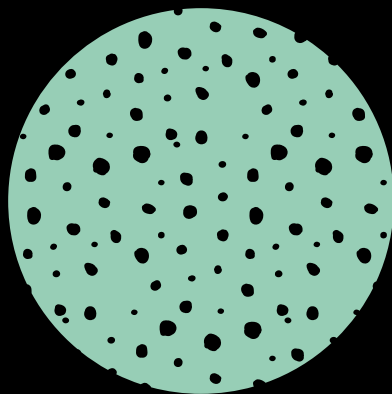
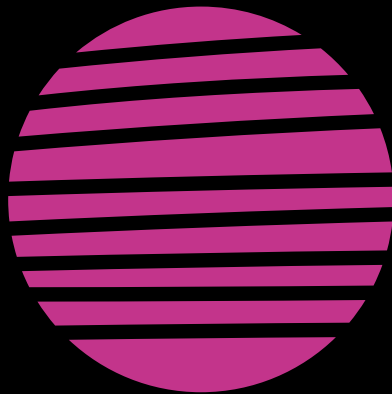
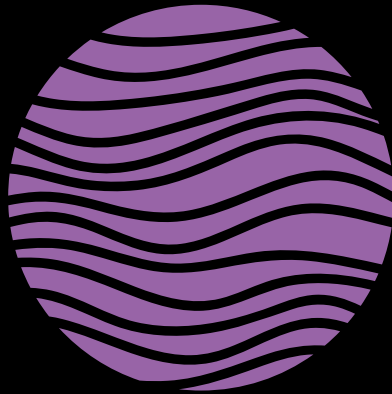


# PLENA

Collagen products for regeneration



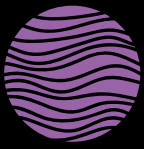
# PLENA

PLENA is a line of regenerative dental membranes in highly purified porcine collagen, created with a technology that allows to modulate the resorption times in the production phase adapting them to the different needs of the clinician and to different applications.

Designed for bone and tissue regeneration in oral surgery, highly biocompatible, easy to position and fix, PLENA membranes combine effectiveness and ease of use. They are available in two versions.

The line also includes PLENA Graft, the biomaterial in carbonate apatite granules from cancellous porcine bone, subject to the same rigorous production and purification controls. The autologous bone-like structure makes it one of the most effective materials in reconstruction and filling procedures.





# PLENA FLEX

Collagen membrane from purified porcine peritoneum

Its structure is permeable to macromolecules and nutrients but manages to create an effective barrier.

**RESORPTION**  
3-4 months

**Flexible**, easy to place

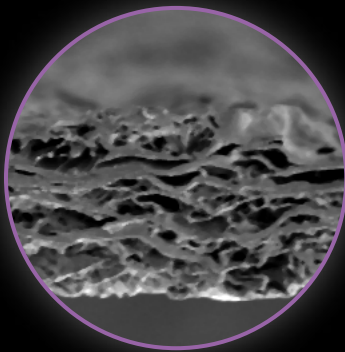
**Soft, drapeable and easy to handle**, very resistant at the same time

**Easy to fix** even with sutures or nail screws, **laceration resistant**

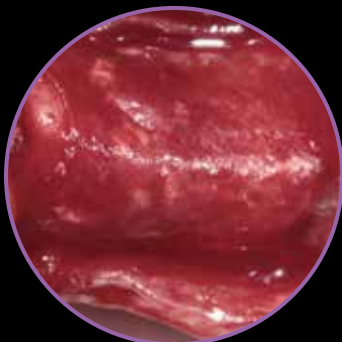


Can be used from **both sides**

Does not stick to instruments




50x SEM Image



Clinical image courtesy of dr. Marco Csonka, Catania

### Indications:

- pre-implant bone regeneration procedures;
- peri-implant bone regenerations, both immediate and deferred post-extraction;
- periodontal regeneration (GTR).

	code	description
	CDMPP1520	PLENA FLEX resorbable collagen membrane 15x20 mm
	CDMPP2030	PLENA FLEX resorbable collagen membrane 20x30 mm



# PLENA MEDIUM

Collagen membrane from purified intact porcine dermis

Its structure is permeable to macromolecules and nutrients but manages to create an effective barrier.

**RESORPTION**  
6-9 months

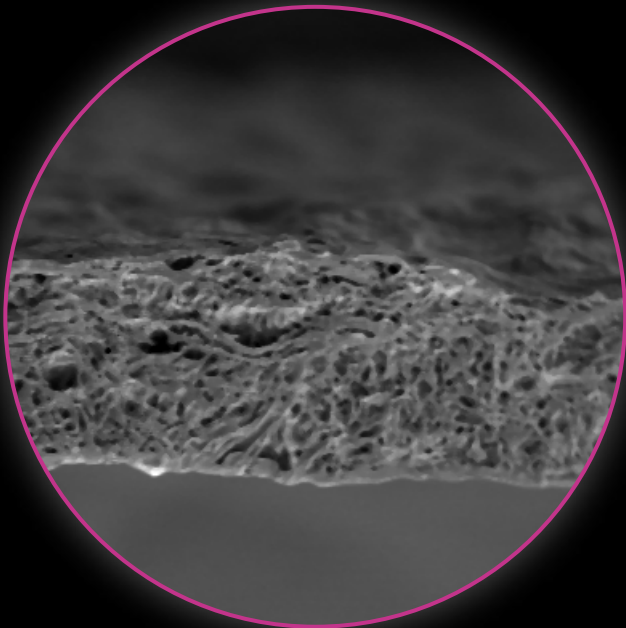
Good resistance  
to traction

Created with the right  
balance between stiffness  
and handling

Can be used from  
both sides

Easy to fix even with  
sutures or nail screws,  
laceration resistant

Does not stick to the  
instruments



50x SEM Image

## Indications:



- Socket preservation;
- bone reconstructions;
- GBRs that, due to the intrinsic characteristics of the defect or the general condition of the patient, require a slow resorption of the membrane.

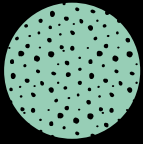


*Instructional images*



*Clinical image courtesy of dr. Marco Csonka, Catania*

code	description
 PDM1520	PLENA MEDIUM collagen resorbable membrane 15x20 mm
 PDM2030	PLENA MEDIUM collagen resorbable membrane 20x30 mm



# PLENA GRAFT

**Biomaterial in carbonate apatite granules from highly purified porcine cancellous bone**

Plena Graft is subject to several rigorous steps in the production process to eliminate and inactivate antigens and microorganisms and make the product safe for clinical use. Materials formed from carbonate apatite crystals are more osteoconductive than hydroxyapatite. Resorption and remodeling are much more similar to the autologous bone process than synthetic materials such as hydroxyapatite or tricalcium sulfate. The high porosity and roughness of the granules are two characteristics that significantly influence the adhesion of cells and accelerate resorption by osteoclasts and increase the affixing of osteoblasts from mesenchymal cells, as well as influence other factors related to the expression of the phenotype such as the production of type I collagen, osteocalcin, extracellular matrix and mineralized material.

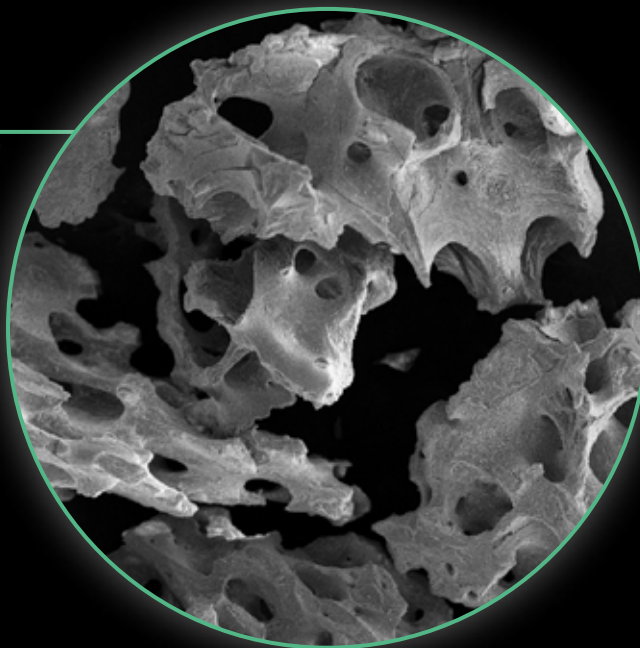
**RESORPTION**  
6-9 months



**Safe purification process**

Macropores range between 0.1 mm and 1.0 mm

**Optimal porosity:** large pores and granules with high surface roughness, features that facilitate cell adhesion



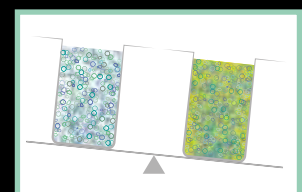
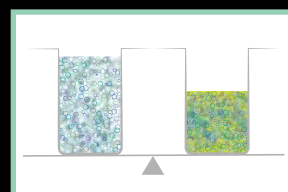
25x SEM Image

It demonstrates a high filling of the volume of the defect compared to other materials with the same weight

Structure of carbonate apatite similar to autologous

## Indications:

- reconstruction and increase of the alveolar crest;
- filling of defects post radicular resection, apicectomy, cystectomy;
- Socket preservation;
- filling of periodontal defects in association with membranes;
- filling of peri-implant defects in association with products for GBR and GTR.



**Low density** (88% of empty space left by microgranules and 95% by macrogranules) = better vascularization and osseointegration

# Clinical case

Courtesy of dr. Marco Csonka, Catania



*Vestibular bone dehiscence at implant inserted in position 24*



*The defect is filled with Plena Graft; note the marked hydrophilicity of the material and its easy adaptability to the defect*





*The site is then protected with a Plena Flex resorbable membrane; easy intraoperative handling and excellent spontaneous adaptation to the receiving site*



*Result after 5 months. Once the reopening of the regenerated site has been performed, an advanced state of maturation of the newly formed bone tissue is noted; there are some residual granules of biomaterial perfectly osseointegrated and adherent to the underlying tissue*



*The correct use of Plena biomaterials and flap passivation techniques and layer suturing*  
*dr. Marco Csonka*

	code	description
	PMC0510	PLENA Graft, 0.5 cc jar
	PMC1010	PLENA Graft, jar 1 cc



rev.05-22 v01



**Sweden & Martina S.p.A.**

Via Veneto, 10  
35020 Due Carrare (PD), Italy  
Tel. +39.049.9124300  
Fax +39.049.9124290  
info@sweden-martina.com  
www.sweden-martina.com

**Sweden & Martina Ltd**

Unit 1b  
Amberley Court, Whitworth Road  
Crawley, West Sussex, RH11 7XL  
Toll free 0800 1123575  
info.uk@sweden-martina.com

**Sweden & Martina Inc.**

**Distributor for U.S.**  
4700 S Mill Ave, Ste B-16  
PO Box 23748 - Tempe, AZ 85282  
Toll free 1-844-8MARTINA (1-844-862-7846)  
info.us@sweden-martina.com  
www.sweden-martinainc.com

**Sweden & Martina Mediterranea S.L.**

España - info.es@sweden-martina.com  
**Sweden & Martina Lda**  
Portugal - info.pt@sweden-martina.com

Plena products are medical devices manufactured by Collagen Matrix Inc., 15 Thornton Road, Oakland, New Jersey 07436 USA, European Agent MDSS GMBH, Germany. The Sweden & Martina plant produces Medical Devices according to the cGMP in force in the USA and in other countries of the world.



Some products may not be regulatory/released for sale in all markets.  
All trademarks herein are the property of Sweden & Martina S.p.A. unless otherwise indicated.  
This material is intended for laboratories and clinicians and is not intended for patient distribution.  
This material is not to be redistributed, duplicated, or disclosed without the express written consent of Sweden & Martina S.p.A.  
For additional product information, including indications, contraindications, warnings, precautions, and potential adverse effects, see Sweden & Martina S.p.A. website.

The contents are updated at the time of publication. Check with the company for any subsequent updates.